



L380 RC Explorer
Issue 2, Halogen, Remote Control

APPLICATION

The **FRANCIS EXPLORER Range** of Remote Control searchlights has been designed with the precise aim of bringing to the market, the ultimate searchlight able to guarantee high performance, strength and affordability.

The L380RC Explorer has been carefully developed to withstand the extraordinary conditions while in use in the harshest of environment, such as Coast Guard patrol. The heavy duty gearbox is strong, powerful and able to operate in the rough seas and high strength winds as found in coastal areas such as Canada and Scandinavia.

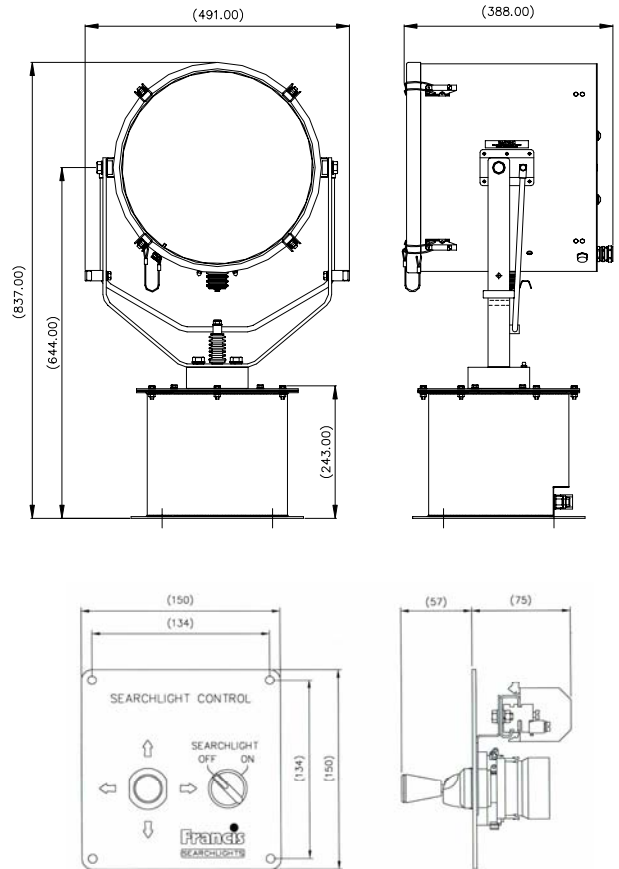
This range now also has the added benefit of a heater fitted to the gearbox as standard, allowing an operation temperature of up to -50 °c.

PART NUMBERS

| Type | Supply | Lamp cap | Part No. |
|--------|----------|----------|----------|
| L380RC | 115/240v | GX9.5 | A2532 |
| L380RC | 24v | GX6.35 | A2531 |

SPECIFICATION

- Constructed from stainless steel
- Powder coated / Stove enamel paint finish.
- Toughened front glass.
- Sealing to IP66.
- Parabolic form, aluminium reflector.
- Remote elevation control ±25°. Remote pan rotation 365°.
- Rotation speed 20°/sec Elevation 5°/sec
- Supplied with joystick control
- Tough and durable construction
- Tungsten halogen light source.
- Heater standard in gearbox and an option in barrel
- Operational temperature range -50°C.
- Remote focus available as an option



PERFORMANCE DATA *inclusive angle

| Volts | Lamp life | Range Mtrs | PBCP x1000 | Div * | Watts | Lamp cap | Lamp Part No |
|-------|-----------|------------|------------|-------|-------|----------|--------------|
| 24v | 300 hs | 1311 | 1718 | 2 | 150 | GX6.35 | D14795 |
| 24v | 2000 | 1390 | 1932 | 2.5 | 250 | GX6.35 | D4695 |
| 24v | 300 | 1673 | 2800 | 3 | 250 | GX6.35 | D9851 |
| 115v | 750 | 1249 | 1560 | 6 | 1000 | GX9.5 | D1809 |
| 230v | 750 | 1114 | 1240 | 5 | 650 | GX9.5 | D1813 |
| 230v | 750 | 1210 | 1465 | 5 | 1000 | GX9.5 | D6715 |

All Dimensions in Millimetres.

Base fixing details :-
 4 holes Ø12.5 equi-spaced on a 290 P.C.D.
 Weight 30.4 Kgs